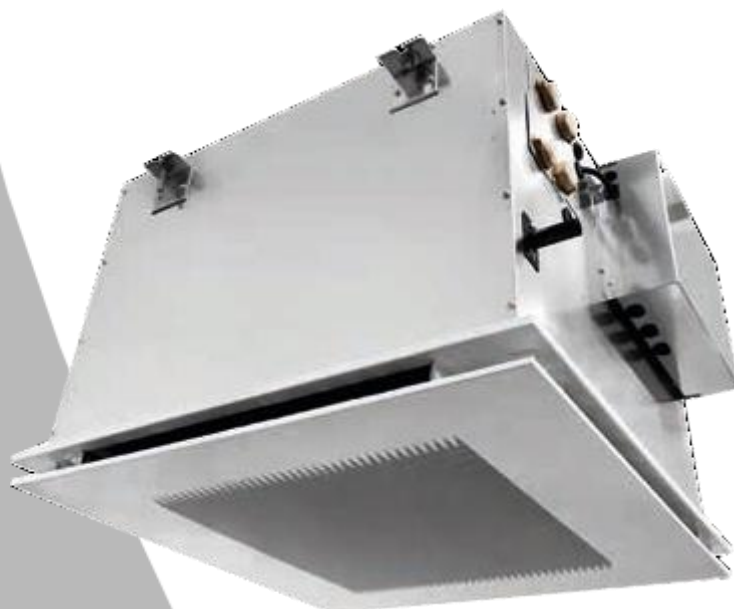




SERIES BREZZA VDI 6022



TECHNICAL MANUAL



NEW HYGIENIC
HYDRONIC
CASSETTE



CONTENTS

1-INTRODUCTION.....	4
2-LIMITS OF USE.....	5
3-COANDA EFFECT	6
4-CODES READING KEY	8
5-TECHNICAL SPECIFICATIONS	8
6-TECHNICAL DATA (AC motor).....	10
7-TECHNICAL DATA (EC motor).....	12
8-DIMENSIONS AND WEIGHT	15
9-ACCESSORIES.....	16
9.1-Valves (V) and auxiliary drain pan (ADPB).....	17
9.2-Auxiliary drain pump (PSCC-BI)	19
9.3- Flange for ductable air delivery (FLMA).....	20
9.4- Flange for external air intake (FLAE).....	20
9.5- Differential pressure switch for standard filter(P233A4PHCZ)	21
9.6- Differential pressure switch for high efficiency filter FA/H (DBL-205B)	22
9.7-High efficiency filter (FA/H)	22

BREZZA VDI 6022

1-INTRODUCTION

The BREZZA VDI units are series for air conditioning in the residential and commercial sector, for indoor installation, not exposed to ice or extreme temperatures, non-dusty and non-explosive environment. The manufacturer is not responsible in case of incorrect use.

The units are made using innovative metals and polymers, tested according to DIN EN ISO 846 which inhibit bacterial proliferation. All constructive measures are also adopted to improve the internal cleanliness of the unit and the healthiness of the treated air. This has made it possible to obtain certification according to the VDI 6022 standard and therefore the units are particularly suitable for installation in hospitals, clinics, food applications and public places where a high level of hygiene as well as comfort is required.



ATTESTAZIONE DI VERIFICA DELLA CONFORMITÀ VDI 6022
VDI 6022 CONFORMITY STATEMENT

Fabbricante / manufacturer:
AERTESI S.r.l.

SEDE LEGALE/legal site: *viale della Tecnica, 6/A - 35026 Conselve (PD)*
SEDE PRODUTTIVA/production plant: *via M. Pellizzari, 1/A - 31020 S.Zenone degli Ezzelini (TV)*

Oggetto / referring to product(s):

Descrizione Prodotto <i>Product Description</i>	CASSETTA IDRONICA HYDRONIC CASSETTE
Tipo / Type	BREZZA VDI6022
Codice prodotto <i>Product code</i>	BREXXVDIXX
Norme Applicate <i>Applied standard(s)</i>	VDI 6022 - Blatt 1 / Part 1 Ventilation and indoor-air quality Hygiene requirements for ventilation and air-conditioning systems and units VDI 6022 – Blatt 1 / Part 1 01/2018 VDI 6022 – Blatt 1 Berichtigung Corrigendum concerning standard VDI 6022 Part 1:2018-01 of 04/2023 RLT guidelines 01 - General requirements for Air Handling Units First issue February 2018 Last issue June 2021 VDI/ÖFR 6022 Blatt 1.1 / Part 1.1 07/2024 Hygiene requirements for ventilation and air-conditioning systems Special features of decentralized ventilation systems/units
Esito della Valutazione <i>Assessment Result</i>	Products compliance to applicable requirements (refer to inspection n° 86274-R rev. 00 of 4/2/2025) <i>Conformità dei prodotti ai requisiti applicabili</i> (fare riferimento all'ispezione n° 86274-R rev. 00 del 4/2/2025) Report di valutazione finale del / <i>Final Assessment Report 86274 of 4/2/2025</i>

Page 1 of 1

Emissione / issue: 5.02.2025
Validità / valid until: 5.02.2028
N° di registrazione/ registration: 086274-1

EUROCERTIFICATIONS S.r.l.




EUROCERTIFICATIONS S.r.l. (P.IVA: 04336060167)
Sede Legale e Uffici Operativi: via Puccini, 1 - 24040 – Madone (BG)
ufficio: 035 4997726 | e-mail: info@eurocertifications.it | website: www.eurocertifications.it



The BREZZA series is offered both with traditional three-speed AC motors and with low consumption EC motors that allow save energy and extended speed regulation range.

2-LIMITS OF USE

Power supply	230V / 50Hz (*)
Water inlet temperature	5 ÷ 70°C
Air return temperature	12 ÷ 50°C
Air return relative humidity	15 ÷ 70%

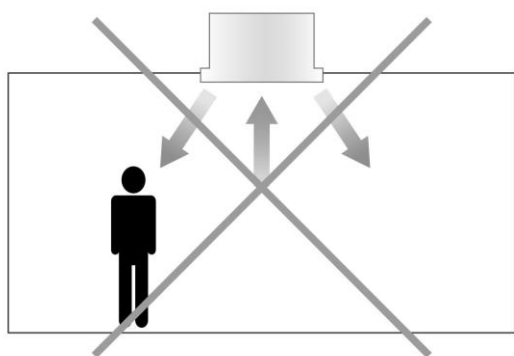
(*) +/-10% on the power supply voltage

It is advisable to let the unit work at the extremes of the mentioned limits of use only for short periods, because operation for long periods can reduce the normal life of the components.

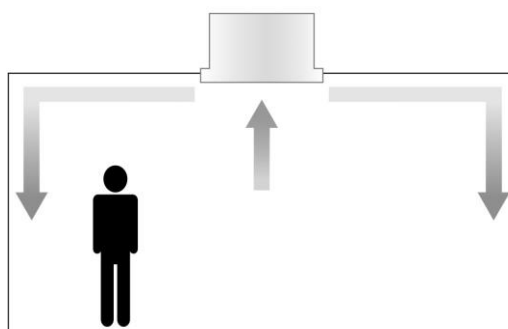
3-COANDA EFFECT

The units of the BREZZA series are designed to guarantee a high level of comfort. In fact, the annoying cold air currents (which has always been the problem of cassette fan-coils) are avoided by the particular shape of the panel, which introduces the air into the room with the COANDA effect.

The COANDA effect is the tendency of a jet of fluid to follow the contour of a nearby surface. Then the air flow follows the ceiling, and then falls back in correspondence with the walls. Since the speed of the air at this point is very low, this does not create inconvenience to people.

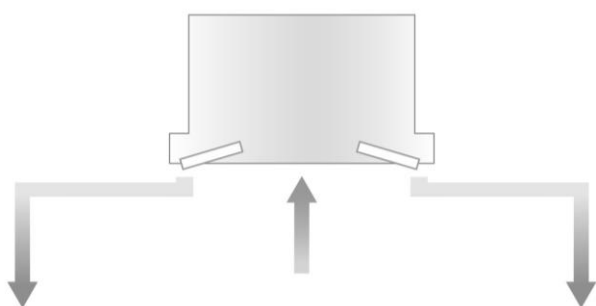


Traditional cassette

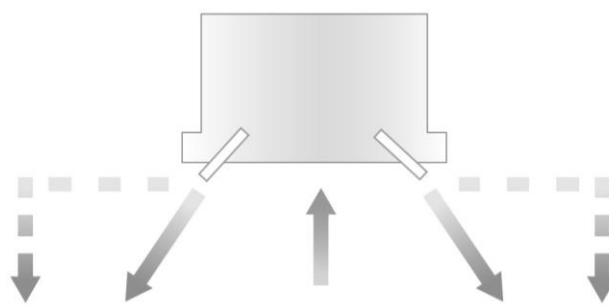


Coanda effect cassette

In the event that the ceiling height is greater than 3m and therefore there is a need to direct the air flow downwards, a panel with adjustable fins is available as an accessory. In this way it is possible to manually set, for each of the four outlets, the orientation of the flow: horizontal (with coanda effect), vertical or in an intermediate position.



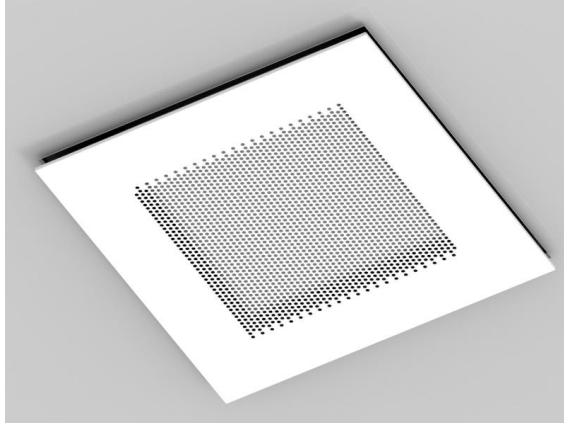
*Cassette with MPKD panel
Flaps in horizontal position (coanda)*



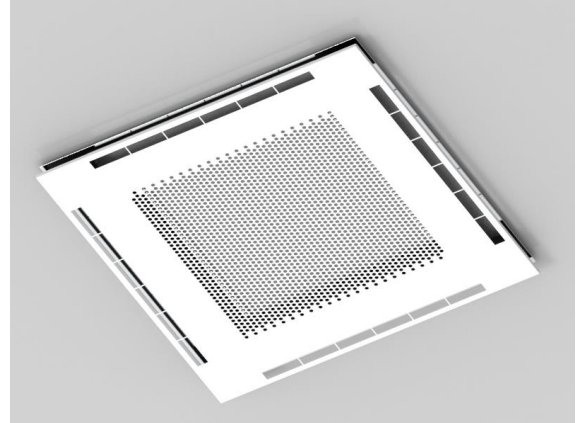
*Cassette with MPKD panel
Flaps in vertical position*

The panel constitutes a separate ordering code by the cassette and is available in the following versions:

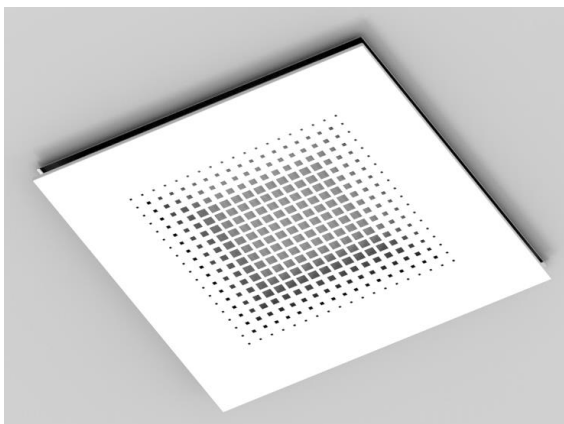
MPKC
Fixed fins round holes



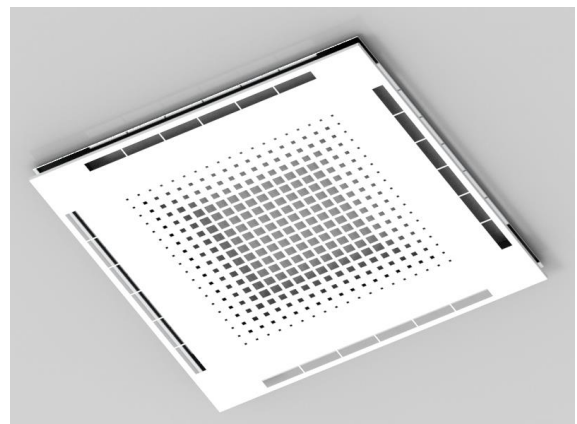
MPKD
adjustable fins round holes



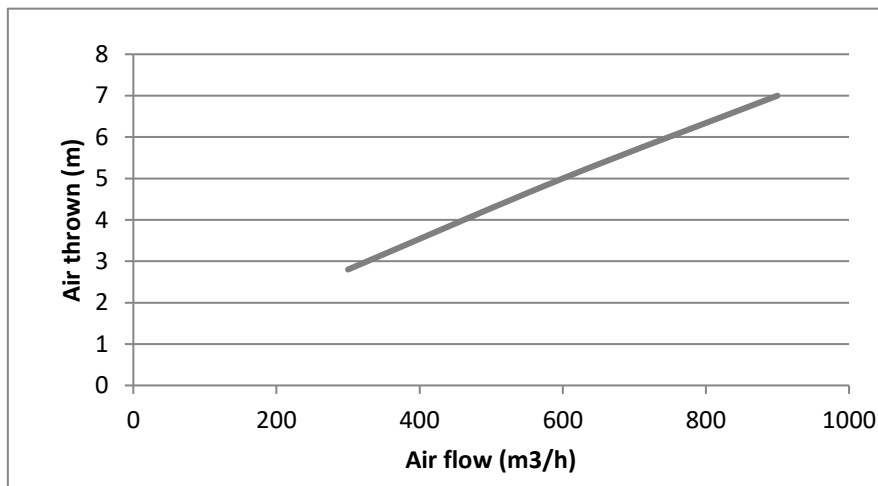
MPKC S128
Fixed fins squared holes



MPKD S128
adjustable fins squared holes



ATTENTION! The temperature difference between the supply air and the ambient air can greatly affect the air flow.



4-CODES READING KEY

	BRE	5	3	VDI	EC
Unit model					
5, 7, 8, 9 : unit size					
Coil type 1 : Not available 2 : Not available 3 : 2 pipes, 3 rows 4 : Not available 5 : 4 pipes, 1+2 rows (hot water raw internal)					
VDI : version VDI 6022 certified					
EC : electronic motor -- : 3 speeds AC motor					

	MPKC/VDI	-	BRE	5/7/9
MPKC/VDI: fix blades panel				
MPKD/VDI: adjustable blades panel				
Unit model				
Unit size				

5-TECHNICAL SPECIFICATIONS

STRUCTURE: made of 1,00 thick galvanized steel sheet. The sturdy construction prevents vibrations and includes ceiling fixing brackets. Upon request, stainless steel or other metals can be used, in accordance with VDI 6022.

FRONT PANEL: made of 0,8mm thick painted 9003 sheet. The shape of the deflectors ensures a coanda effect to the outgoing air flow. As an accessory, it is possible to have adjustable deflectors to have coanda effect or vertical air flow (or intermediate positions). The pleasant design of the panel integrates perfectly into any environment and type of false ceiling.



N.B. The FRONT PANEL is intended as an accessory to be ordered additionally.

ACCESSIBILITY: the filter can be removed without the use of tools. Accessibility to internal components (fan, tray, coil) is guaranteed by removing the front panel. The hydraulic connections, the valves and the electrical panel are on the same side and therefore only one inspection hatch is required in the false ceiling.

FILTER: class G2 (EN779), ISO COARSE ePM10 49% (EN ISO 16980) thickness 6mm.

FAN GROUP: the fans have backward curved blades, directly coupled to the motor. The fan is made of reinforced plastic material. The motor and fans are balanced after being assembled, to ensure the absence of vibrations. Motor mounted on maintenance free ball bearings.

The AC motor has three speeds, protection degree IP44, insulation class "B". Built-in thermal protection.

The EC motor is 0-10V control, protection degree IP54, insulation class "B", interference emissions according to EN 61000-6-3 (civil environment), thermal protection of the motor and electronics, protection for locked rotor.

COIL: made with 3/8 "diameter copper pipe and high efficiency corrugated aluminum fins, with manual air vent valve in the upper part. Nominal pressure PN10. The Coil sheet flanks are made in stainless steel AISI 304 and avoid the formation of oxide on the surface.

CONDENSATE COLLECTION TRAY: air conveyor and condensate collection tray made of plastic material, which guarantees the absence of corrosion and water leaks even after long use. The shape of the tray facilitates the drainage and prevents water stagnation.

INSULATION: cassette body insulated with 10mm thick cross-linked polyethylene foam, in class B-s2d0 BL-s1d0 according to the EN13501-1 standard. Front panel insulated with polyethylene thickness 10mm and 3mm. All the insulations are coated with an aluminum foil on the side of the air flow; this also allows surfaces to be cleaned without scratching or damaging the insulation.

ELECTRICAL PANEL: made of galvanized steel sheet and positioned on the same side of the hydraulic connections.

CONDENSATE DRAIN: made by gravity, without a condensate drain pump, to eliminate the possibility of stagnating water in the tray.

6-TECHNICAL DATA (AC motor)

This chapter lists the operating specifications of the units with 3-row main coils and 1-row auxiliary coils. The main 1- and 2-row coils are also available from our selection software.

6.1-Unit with 3-row coil

		2 PIPES											
		53			73			83			93		
Speed		min	med	max	min	med	max	min	med	max	min	med	max
Air flow rate	mc/h	290	380	550	350	500	710	410	560	770	540	790	920
COOLING - air 27 °C (dry bulb) , 19 °C w.b. - water inlet 7 °C, outlet 12 °C													
Total capacity	kW	2,25	2,79	3,71	2,62	3,45	4,47	2,97	3,76	4,74	3,66	4,82	5,36
Sensitive capacity	kW	1,58	1,99	2,70	1,86	2,50	3,30	2,12	2,74	3,52	2,66	3,59	4,03
Water flow rate	l/h	387	480	638	450	594	769	510	647	814	629	829	921
Δp (water)	kPa	4,3	6,3	10,3	5,6	9,1	14,3	7,0	10,6	18,0	10,1	16,4	23,0
HEATING - air 20 °C - water inlet 45 °C, outlet 40 °C													
Capacity	kW	2,17	2,75	3,78	2,56	3,49	4,62	2,94	3,84	4,93	3,72	5,03	5,67
Water flow rate	l/h	375	476	654	443	604	799	509	664	853	644	870	980
Δp (water)	kPa	3,4	5,1	8,9	4,5	7,8	12,7	5,7	9,2	19,0	8,7	14,7	23,0
MOTOR ELECTRIC POWER DRAW													
Power draw	W	25	30	40	30	36	50	41	50	64	54	72	87
Max power draw	A	0,18			0,23			0,29			0,40		
SOUND DATA													
Sound power	dB(A)	35	39	48	39	46	55	40	48	57	49	59	62
Sound pressure (*)	dB(A)	26	30	39	30	37	46	31	39	48	40	50	53

(*) = sound pressure levels are lower than the power levels of 9 dB (A) for a room of 100 m³ and a reverberation time of 0.5 sec.

		4 PIPES					
		75			95		
Speed		min	med	max	min	med	max
Air flow rate	mc/h	350	500	710	540	790	920
COOLING - air 27 °C (dry bulb) , 19 °C w.b. - water inlet 7 °C, outlet 12 °C							
Total capacity	kW	2,20	2,81	3,56	2,96	3,81	4,19
Sensitive capacity	kW	1,60	2,10	2,73	2,23	2,94	3,28
Water flow rate	l/h	375	483	612	509	655	721
Δp (water)	kPa	6,2	9,7	14,6	10,6	16,5	19,5
HEATING - air 20 °C - water inlet 65°C, outlet 55°C							
Capacity	kW	2,83	3,62	4,61	3,82	4,95	5,47
Water flow rate	l/h	243	312	397	328	425	471
Δp (water)	kPa	5,2	8,1	12,3	8,9	14,0	16,7
MOTOR ELECTRIC POWER DRAW							
Power draw	W	30	36	50	54	72	87
Max power draw	A	0,23			0,40		
SOUND DATA							
Sound power	dB(A)	39	46	55	49	59	62
Sound pressure (*)	dB(A)	30	37	46	40	50	53

(*) = the sound pressure levels are lower than power levels by 9 dB(A) for a 100 m³ space and a reverberation time of 0.5 sec.

Sound levels

	Speed [V]	Sound power									Sound pressure	NR
		125Hz	250Hz	500Hz	1000Hz	2000Hz	4000Hz	8000Hz	TOTALE			
		dB	dB	dB	dB	dB	dB	dB	dB	dB(A)	dB(A)	
BRE 53	Min	42,2	39,8	33,1	25,6	15,5	12,2	16,3	44,6	35,0	26,0	20
	Med	43,6	43,4	37,4	31,5	23,8	12,3	12,8	47,1	39,0	30,0	24
	Max	49,6	50,7	46,8	42,1	35,8	25,4	15,0	54,4	48,0	39,0	34
BRE 73/75	Min	46,2	43,8	37,1	29,6	19,5	16,2	20,3	48,6	39,0	30,0	24
	Med	50,6	50,4	44,4	38,5	30,8	19,3	19,8	54,1	46,0	37,0	32
	Max	56,6	57,7	53,8	49,1	42,8	32,4	22,0	61,4	55,0	46,0	41
BRE 83	Min	47,2	44,8	38,1	30,6	20,5	17,2	21,3	49,6	40,0	31,0	25
	Med	52,6	52,4	46,4	40,5	32,8	21,3	21,8	56,1	48,0	39,0	34
	Max	58,6	59,7	55,8	51,1	44,8	34,4	24,0	63,4	57,0	48,0	43
BRE 93/95	Min	54,0	53,6	47,2	41,3	33,4	22,1	21,7	57,4	49,0	40,0	35
	Med	60,8	61,3	58,1	53,0	46,7	37,9	26,5	65,4	59,0	50,0	45
	Max	63,7	63,0	60,9	57,0	50,5	43,5	32,3	67,9	62,0	53,0	48

NR values calculated considering a difference of 9 dB between sound power and sound pressure for a room of 100 m³ and a reverberation time of 0.5 sec. The db(A) data declared in the technical table of the manual was obtained from the sum of the db(A) relating to all the octave bands and not only to the central one. The value may therefore differ slightly from those deriving from the above data for purely mathematical reasons.

7-TECHNICAL DATA (EC motor)

This chapter lists the operating specifications of the units with 3-row main coils and 1-row auxiliary coils. The main 1- and 2-row coils are also available from our selection software.

7.1- Unit with 3-row coil

		2 PIPES									
		73					93				
Speed(E)		2V	4,7V	6,6V	9,8V	10V	2V	4,0	6,6	8,8	10V
Air flow rate	mc/h	150	300	450	700	716	150	350	600	835	960
COOLING - air 27 °C (dry bulb) , 19 °C w.b. - water inlet 7 °C, outlet 12 °C											
Total capacity	kW	1,18	2,25	3,11	4,32	4,4	1,16	2,55	3,86	4,88	5,41
Sensitive capacity	kW	0,82	1,59	2,23	3,19	3,24	0,81	1,81	2,82	3,65	4,03
Water flow rate	l/h	203	397	548	761	754	199	450	680	862	928
Δp (water)	kPa	1,4	4,5	7,9	14,1	14,6	1,4	5,6	11,6	17,5	21
HEATING - air 20 °C - water inlet 45 °C, outlet 40 °C											
Capacity	kW	1,16	2,17	3,11	4,46	4,54	1,16	2,50	3,93	5,12	5,71
Water flow rate	l/h	208	387	552	790	820	208	443	697	909	1033
Δp (water)	kPa	1,3	3,5	6,6	12,4	12,8	1,2	4,5	10,0	15,9	19,4
MOTOR ELECTRIC POWER DRAW											
Power draw	W	2	3	8	22	23	2	5	15	48	63
Max power draw	A	0,17					0,38				
SOUND DATA											
Sound power	dB(A)	28	32	42	53	54	28	37	50	59	65
Sound pressure (*)	dB(A)	19	23	33	44	45	19	28	41	50	56
ENERGY CLASSIFICATION											
FCEER (E)		A					A				
FCCOP(E)		A					A				

(*) = the sound pressure levels are lower than power levels by 9 dB(A) for a 100 m³ space and a reverberation time of 0.5 sec.

		4 PIPES									
		75					95				
Speed		2V	4,7V	6,6V	9,8V	10V	2V	4,0V	6,6V	8,8V	10V
Air flow rate	mc/h	150	300	450	700	716	150	350	600	835	960
COOLING - air 27 °C (dry bulb) , 19 °C w.b. - water inlet 7 °C, outlet 12 °C											
Total capacity	kW	0,96	1,90	2,50	3,40	3,45	0,95	2,10	3,10	3,90	4,29
Sensitive capacity	kW	0,72	1,40	1,90	2,60	2,64	0,71	1,60	2,30	3,00	3,29
Water flow rate	l/h	165	327	430	585	592	166	361	533	671	736
Δp (water)	kPa	1,6	5,1	8,4	14,0	14,4	1,6	5,4	12,0	17,9	21,2
HEATING - air 20 °C - water inlet 65°C, outlet 55°C											
Capacity	kW	1,48	2,42	3,22	4,49	4,52	1,52	2,76	4,03	5,06	5,50
Water flow rate	l/h	132	208	277	386	390	132	237	346	435	454
Δp (water)	kPa		5,4	8,8	14,9	14,9	1,8	5,2	10,1	14,9	17,2
MOTOR ELECTRIC POWER DRAW											
Power draw	W	2	4	9	26	26	2	5	15	48	63
Max power draw	A	0,17					0,38				
DATI SONORI											
Sound power	dB(A)	28	32	42	53	54	28	37	50	59	65
Sound pressure (*)	dB(A)	19	23	33	44	45	19	28	41	50	56
CLASSIFICAZIONE ENERGETICA											
FCEER (E)		A					A				
FCCOP(E)		A					A				

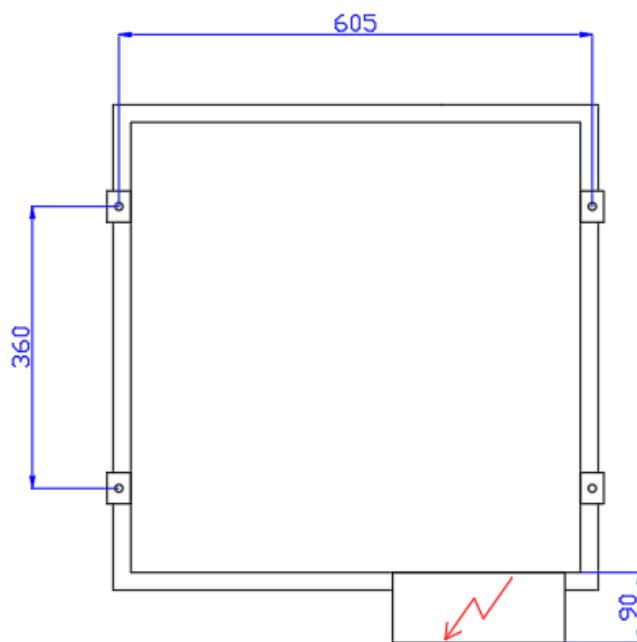
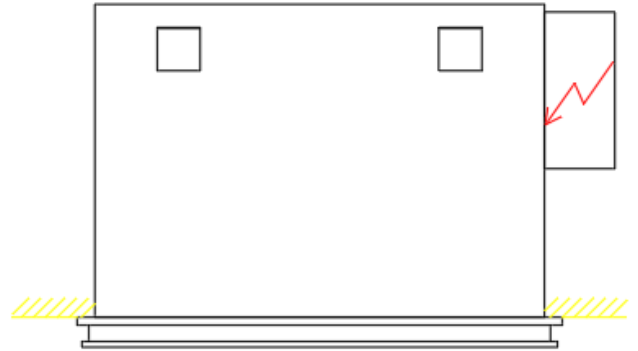
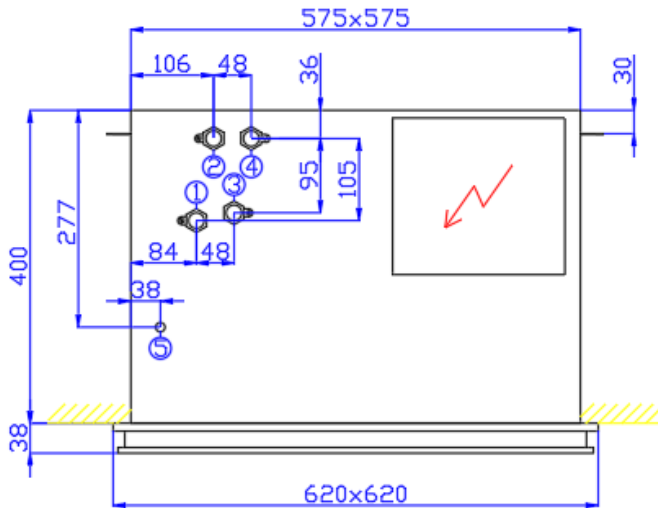
(*) = the sound pressure levels are lower than power levels by 9 dB(A) for a 100 m³ space and a reverberation time of 0.5 sec.

Sound levels

	Speed [V]	Potenza sonora									Sound pressure dB(A)	NR
		125Hz	250Hz	500Hz	1000Hz	2000Hz	4000Hz	8000Hz	TOTALE			
		dB	dB	dB	dB	dB	dB	dB	dB	dB(A)		
BRE 73/75 EC	2V	37,7	32,4	22,9	17,2	8,7	12,3	18,0	39,0	28,0	19	16
	3V	38,8	33,5	24,0	18,3	9,8	13,4	19,1	40,1	29,0	20,0	17
	4V	39,8	34,5	25,0	19,3	10,8	14,4	20,1	41,1	30,0	21,0	18
	5V	44,0	40,7	32,2	26,0	15,2	11,5	16,8	45,9	35,5	26,5	21
	6V	47,5	44,2	35,7	29,5	18,7	15,0	20,3	49,4	39,0	30,0	25
	7V	52,0	48,7	40,2	34,0	23,2	19,5	24,8	53,9	43,5	34,5	30
	8V	50,8	49,6	44,4	39,2	32,9	21,7	16,7	54,0	46,0	37,0	31
	9V	53,8	52,6	47,4	42,2	35,9	24,7	19,7	57,0	49,0	40,0	34
	10V	58,8	57,6	52,4	47,2	40,9	29,7	24,7	62,0	54,0	45,0	40
BRE 93/95 EC	2V	37,7	32,4	22,9	17,2	8,7	12,3	18,0	39,0	28,0	19,0	16
	3V	42,8	37,5	28,0	22,3	13,8	17,4	23,1	44,1	33,0	24,0	21
	4V	46,8	41,5	32,0	26,3	17,8	21,4	27,1	48,1	37,0	28,0	25
	5V	50,5	47,2	38,7	32,5	21,7	18,0	23,3	52,4	42,0	33,0	28
	6V	55,5	52,2	43,7	37,5	26,7	23,0	28,3	57,4	47,0	38,0	34
	7V	59,5	56,2	47,7	41,5	30,7	27,0	32,3	61,4	51,0	42,0	38
	8V	60,8	59,6	54,4	49,2	42,9	31,7	26,7	64,0	56,0	47,0	42
	9V	65,8	64,6	59,4	54,2	47,9	36,7	31,7	69,0	61,0	52,0	47
	10V	69,8	68,6	63,4	58,2	51,9	40,7	35,7	73,0	65,0	56,0	51

NR values calculated considering a difference of 9 dB between sound power and sound pressure for a room of 100 m³ and a reverberation time of 0.5 sec. The db(A) data declared in the technical table of the manual was obtained from the sum of the db(A) relating to all the octave bands and not only to the central one. The value may therefore differ slightly from those deriving from the above data for purely mathematical reasons.

8-DIMENSIONS AND WEIGHT



1	Main coil IN	1/2"
2	Main coil OUT	1/2"
3	Auxiliary coil IN	1/2"
4	Auxiliary coil OUT	1/2"
5	Condensation discharge	d.16

		53/73/83/93	75 / 95
Unit weight	kg	35	35
Main coil volume	liters	2,0	1,4
Auxiliary coil volume	liters	-	0,6

9-ACCESSORIES

The available accessories are as follows:

	ACCESSORI IDRAULICI	A/K/C
V22	2-way ON-OFF 230V valve	A/K
V42	2-way ON-OFF valve for 4 pipes	A/K
V23	3-way ON-OFF valve 230V	A/K
V43	3-way ON-OFF 230V valve for 4 pipes	A/K
V22M	2-way modulating valve 0-10V	A/K
V42M	2-way modulating valve 0-10V for 4 pipes	A/K
V23M	3-way modulating valve 0-10V	A/K
V43M	3-way modulating valve 0-10V for 4 pipes	A/K
ADPB	Auxiliary condensate tray (supplied included in the box)	K
PSCC-BI	Auxiliary condensate drain pump	A
	ELECTRICAL ACCESSORIES	
TR24	Transformer 230Vac-24Vac, 20VA for modulating valve	A
P233A4PHCZ	Differential pressure switch for standard filter	B
DBL-205B	Differential pressure switch for FA / H high efficiency filter	A
	AERAILIC ACCESSORIES	
FLMA	Flange for ductable air delivery	B
FLAE	Flange for external air intake	B
	OPTIONAL FILTERS	
FA/H	High efficiency filter PF-ePM10 65%	K

A / K / B: A = accessory supplied mounted on the base unit; K = accessory supplied in unassembled kit;

B = accessory supplied assembled, but not mounted on the base unit

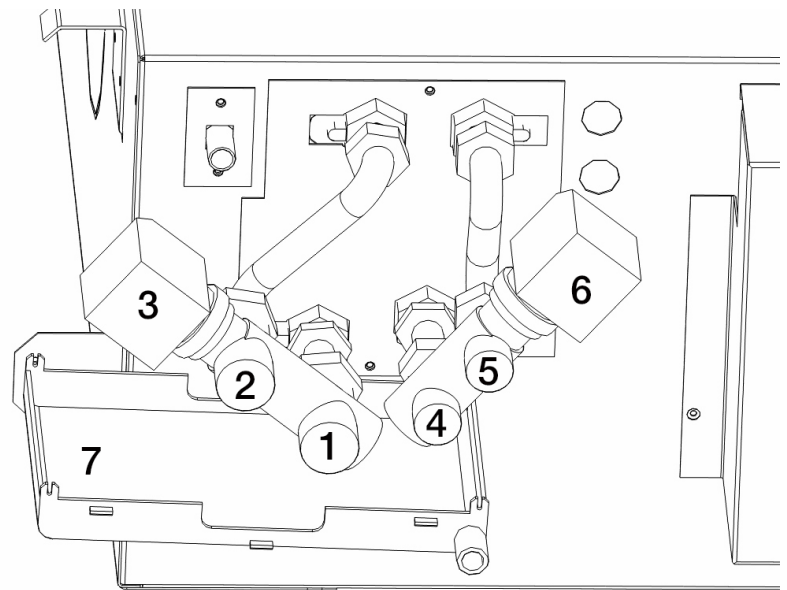
9.1-Valves (V) and auxiliary drain pan (ADPB)

The use of motorized valves is recommended, to avoid condensation on the surface of the unit when the fan is stopped.

The valves can be supplied assembled to the unit or in kits (disassembled components).

The condensate drip tray is supplied as standard with the box, at no extra cost (ADPB).

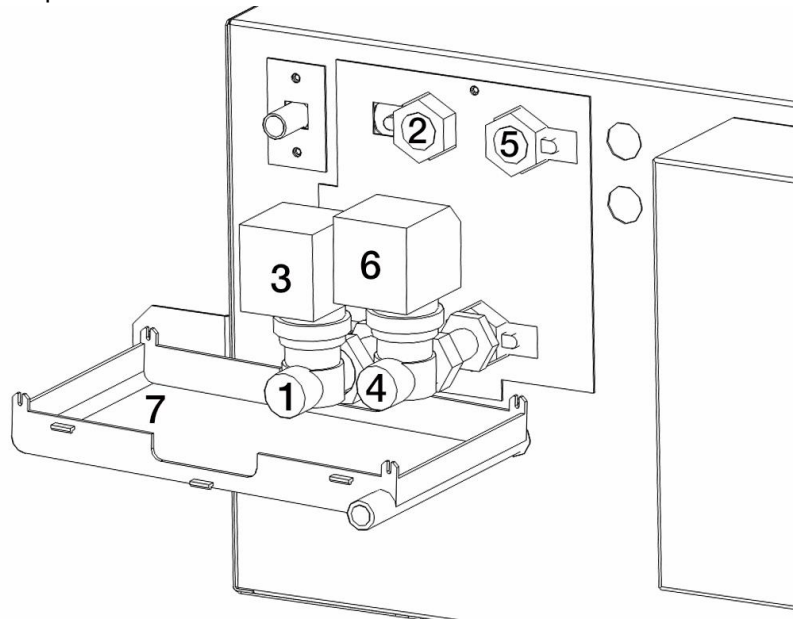
1. Inlet for 2-pipe systems or cold coil (for 4-pipe system)
2. Output for 2-pipe systems or cold coil (for 4-pipe system)
3. Hot / cold valve kit (2 pipes) or Cold valve kit (4 pipes)
4. Hot coil input only for 4-pipe system
5. Hot coil output only for 4-pipe system
6. Hot valve kit for 4-pipe system only
7. Auxiliary drain pan



BREZZA VDI 6022

3 ways 4 ports valve

1. Inlet for 2-pipe systems or cold coil (for 4-pipe system)
2. Output for 2-pipe systems or cold coil (for 4-pipe system)
3. Hot / cold valve kit (2 pipes) or Cold valve kit (4 pipes)
4. Hot coil input only for 4-pipe system
5. Hot coil output only for 4-pipe system
6. Hot valve kit for 4-pipe system only
7. Auxiliary drain pan



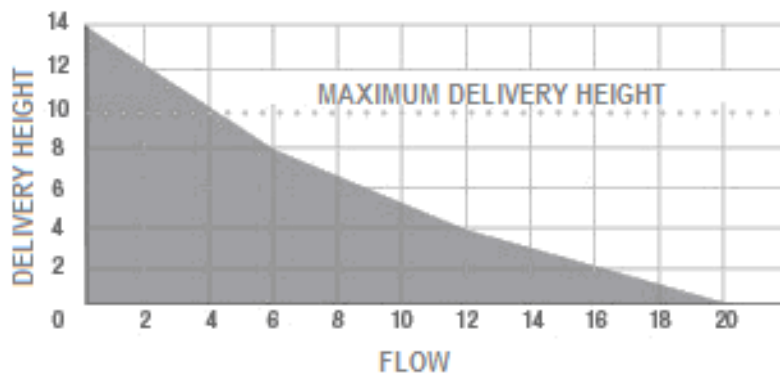
2 ways valve

MAIN COIL VALVE	53-75	73-83-93-95
AUXILIARY COIL VALVE	75-95	----
MAIN FEATURES		
Connection sizes	1/2"	3/4"
Kv (2 ways valve)	1,7	2,5
Kv (3 ways valve, straight way)	1,7	2,5
Kv (3 ways valve, bypass)	1,2	1,6
Max differential pressure	2,0bar	1,0bar
Nominal pressure	16bar	
Water temperature	4-110°C	
ON-OFF ACTUATOR		
Power supply	230V-50Hz (24V-50Hz on request)	
Electric power	2,5W	
Opening/closing time	180s	
Characteristic (valve+actuator)	N.C. (Normally Closed)	
Protection	IP44	
MODULATING ACTUATOR		
Power supply	24V-50Hz	
Electric power	1,5W	
Opening/closing time	8S	
Control signal	0-10V	
Control signal impedance	100k	
Protection	IP43	

9.2-Auxiliary drain pump (PSCC-BI)

The auxiliary condensate drain pump is supplied assembled on the side of the box, next to the drain pipe. Therefore, it is necessary to provide for the possibility of inspection on this side as well.

Maximum water flow	20 l/h
Maximum dumping height	10m (4l/h)
Sound pressure at 1m	28dB(A)
Diet	230V – 50/60Hz
Alarm microswitch	NC 8A resistive 250V
Thermal protection	90°C (automatic rearm)
Protection	IP54

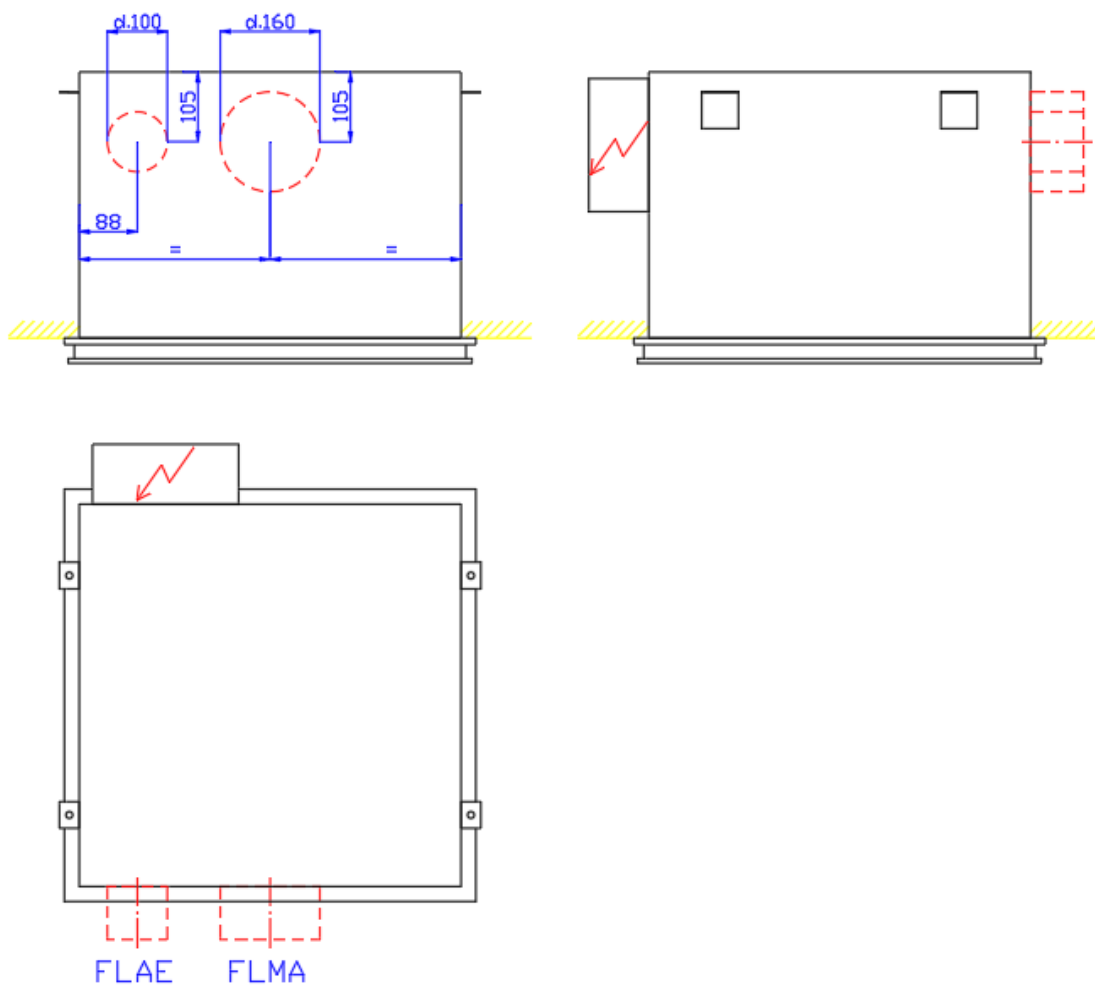


9.3- Flange for ductable air delivery (FLMA)

It is possible to connect a ductable delivery through a d.160 collar. The available head depends on the air flow. The positions of the collars are shown in the figure below.

9.4- Flange for external air intake (FLAE)

It is possible to connect an external air intake through a collar d.100. The maximum external air flow is 100m³ / h. The outside air must be treated, filtered and must not be at a low temperature.



9.5- Differential pressure switch for standard filter(P233A4PHCZ)

Differential pressure switch with normally closed contact, to signal excessively dirty filter. The intervention pressure of the pressure switch makes it suitable for use in units equipped with a standard filter. The use of the pressure switch does not replace the normal cleaning and maintenance of the filter, which is recommended to be carried out regularly before the intervention of the pressure switch.

9.6- Differential pressure switch for high efficiency filter FA/H (DBL-205B)

Differential pressure switch with normally closed contact, to signal excessively dirty filter. The intervention pressure of the pressure switch makes it suitable for use in units equipped with a high efficiency FA / H filter. The use of the pressure switch does not replace the normal cleaning and maintenance of the filter, which is recommended to be carried out regularly before the intervention of the pressure switch.

9.7-High efficiency filter (FA/H)

Filter in synthetic material, overall thickness 130mm and class PF-ePM10 65%. The head losses due to the high filtration class lead to a decrease in the yield of the cassette of about 10% (with clean filter) compared to the nominal performance. It is recommended to also use the standard filter as a pre-filter, otherwise the FA / H filter could clog up very quickly.



something different

AER.MT.BRE-VDI.GB.05.02.25

Aertesi srl
viale della tecnica, 6/a
35026 Conselve (PD) ITALY
t. +39.049.9501109
f. +39.049.9500823
www.aertesi.com
info@aertesi.com